



ISSUE

Issued for Permit
08.05.2016

PROJECT: 16-018

Hampton Inn & Suites

New Stanton, PA 15672

OWNER

Stanton Hospitality LLC

52 Blueberry Lane,
Grove City, PA 16127

THESE DRAWINGS ARE FOR REVIEW OF DESIGN AND SHALL BE DESCRIBED ONLY. NO REPRESENTATION IS MADE TO THE ACCURACY OF THE DRAWINGS WITH RESPECT TO EXISTING DIMENSIONS OR CONDITIONS. ALL CONSULTANTS AND CONTRACTORS MUST VERIFY ANY AND ALL DIMENSIONS AND CONDITIONS WHICH ARE CRITICAL TO THEIR WORK. THESE DRAWINGS ARE INSTRUMENTS OF SERVICE AND ARE THE INTELLECTUAL PROPERTY OF JMAC ARCHITECTS. ANY UNAUTHORIZED USE OR REPRODUCTION IS PROHIBITED.

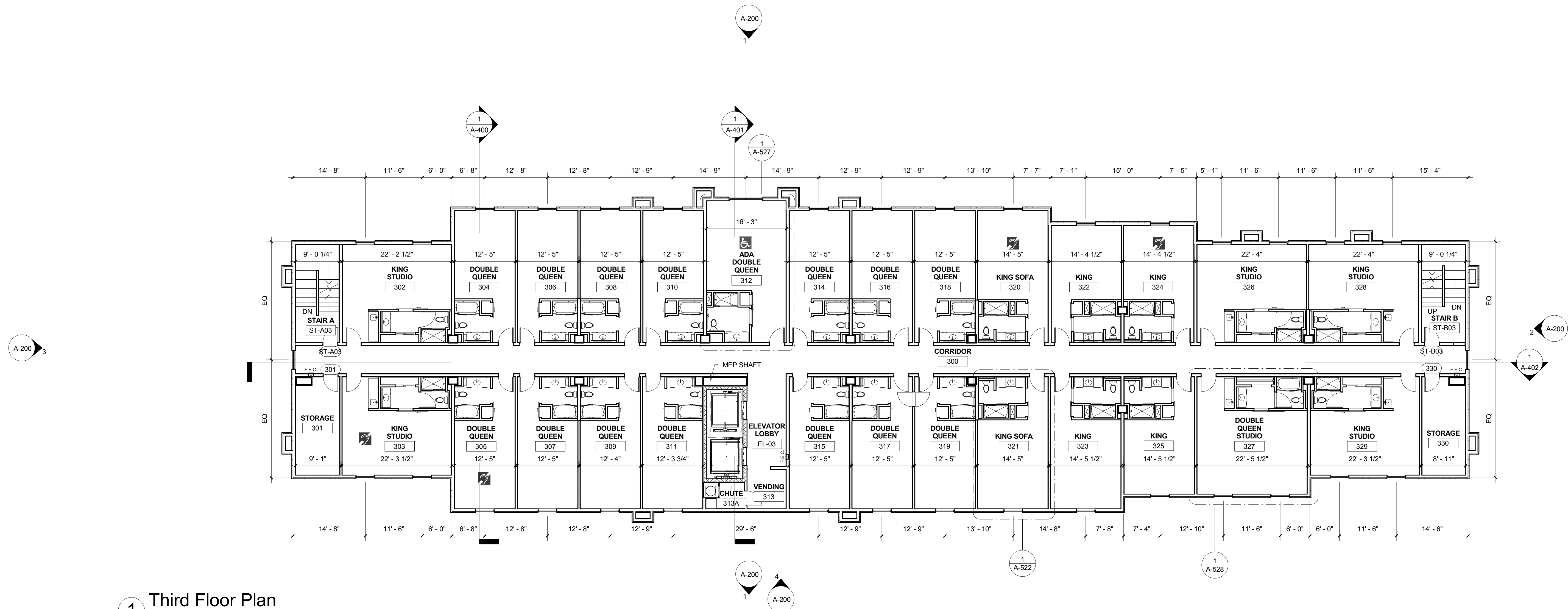
[illegible]

Third & Fourth Floor Plan

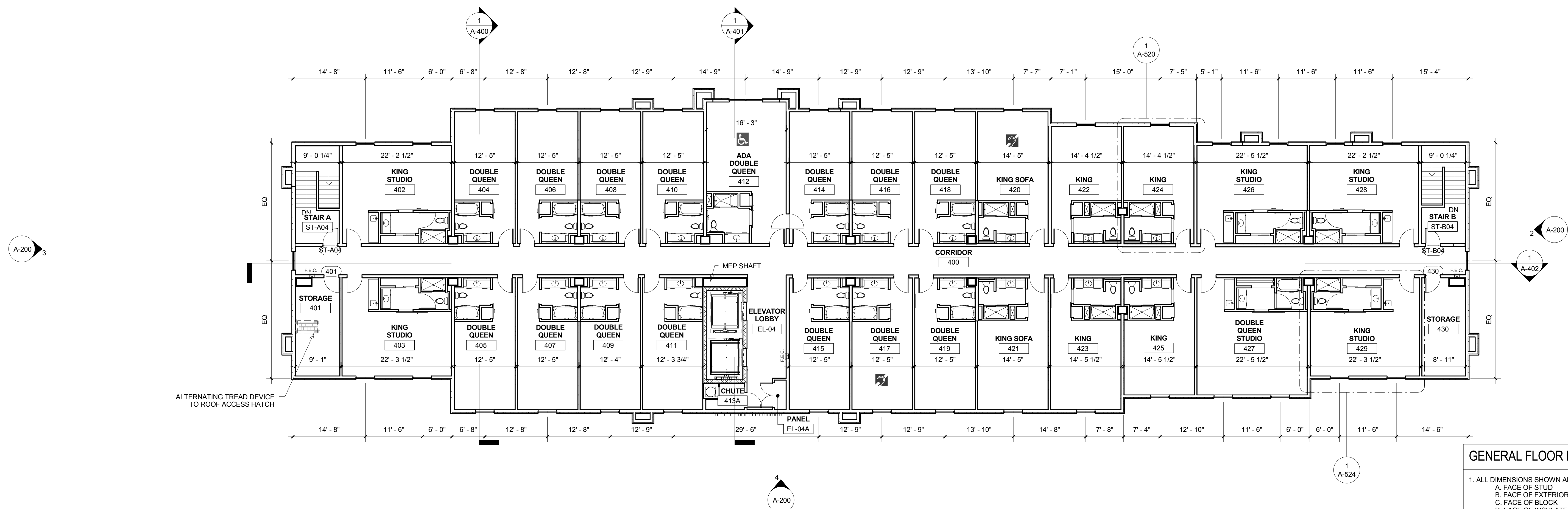
As indicated

A-103

© 2016 JMAC Architects



1 Third Floor Plan
3/32" = 1'-0"



② **Fourth Floor Plan**
3/32" = 1'-0"

GENERAL FLOOR PLAN NOTES

1. ALL DIMENSIONS SHOWN ARE FROM
A. FACE OF STUD
B. FACE OF EXTERIOR SHEATHING
C. FACE OF BLOCK
D. FACE OF INSULATED CONCRETE FORM UNIT
E. CENTERLINE OF BEAM
F. CENTERLINE OF DOORS AND WINDOW -
ROUGH OPENING
2. PLYWOOD SHALL BE FULL 4' X 8' SHEETS INSTALLED
PERPENDICULAR TO FRAMING.
3. EXTERIOR WALLS TO BE 2X6 STUDS W/ DOUBLE TOP PLATES
4. PARTITION TAGS, DOOR TAGS, AND DIMENSIONS FOR UNITS ARE
SHOWN ON THE ENLARGED PLANS
5. PROVIDE BLOCKING FOR GRAB BARS AT ALL BATHROOM FIXTURES
AS REQUIRED. TYPICAL FOR ALL UNITS. SEE SHEET A-006 FOR
LOCATIONS.
6. SHEAR WALLS AND TRUSSES TO BE ENGINEERED, SEALED AND
STAMPED BY PA LICENSED ENGINEER. PROVIDE HANGERS,
HOLD-DOWNS, AND ANCHORS. SEE SHEAR WALL DETAILS ON
SEALED, STAMPED DRAWINGS.
7. SEE STRUCTURAL DRAWINGS FOR STRUCTURAL INFORMATION
8. SEE LAYOUT DWGS FOR PARTITION TYPES.
9. UNITS SHOWN ON OVERALL PLANS FOR REFERENCE ONLY.
SEE A-006 SERIES FOR ENLARGED UNIT PLANS.
10. GUESTROOMS TO BE "TYPE B" ACCORDING TO IBC A117.1-2009,
UNO.
11. SEE STRUCTURAL, MEP AND FIRE PROTECTION DRAWINGS FOR
ADDITIONAL INFORMATION